



Free Flow Exhaust Installation Instructions

**PART NUMBER
D660-0074(-BLK)**

APPLICATION: 2016-18 F26 X4 M40i

Thank you for purchasing a Dinan High Performance Muffler! Some mechanical skill is required to install this muffler. If you are not familiar with this procedure, we strongly recommend that you arrange for a qualified BMW repair facility to perform this installation.

INSTALLATION:



1. Disconnect the battery using BMW factory procedures (make sure the car is asleep).

2. Remove the vacuum hose (1) from the valve as shown in Figure 1. Insert the supplied plug into the end of the hose and zip tie it out of the way.



Fig: 1

3. Assemble the Dinan inlet pipes into the Dinan muffler using the supplied clamps. Do not fully tighten the clamps yet. See Figure 2.

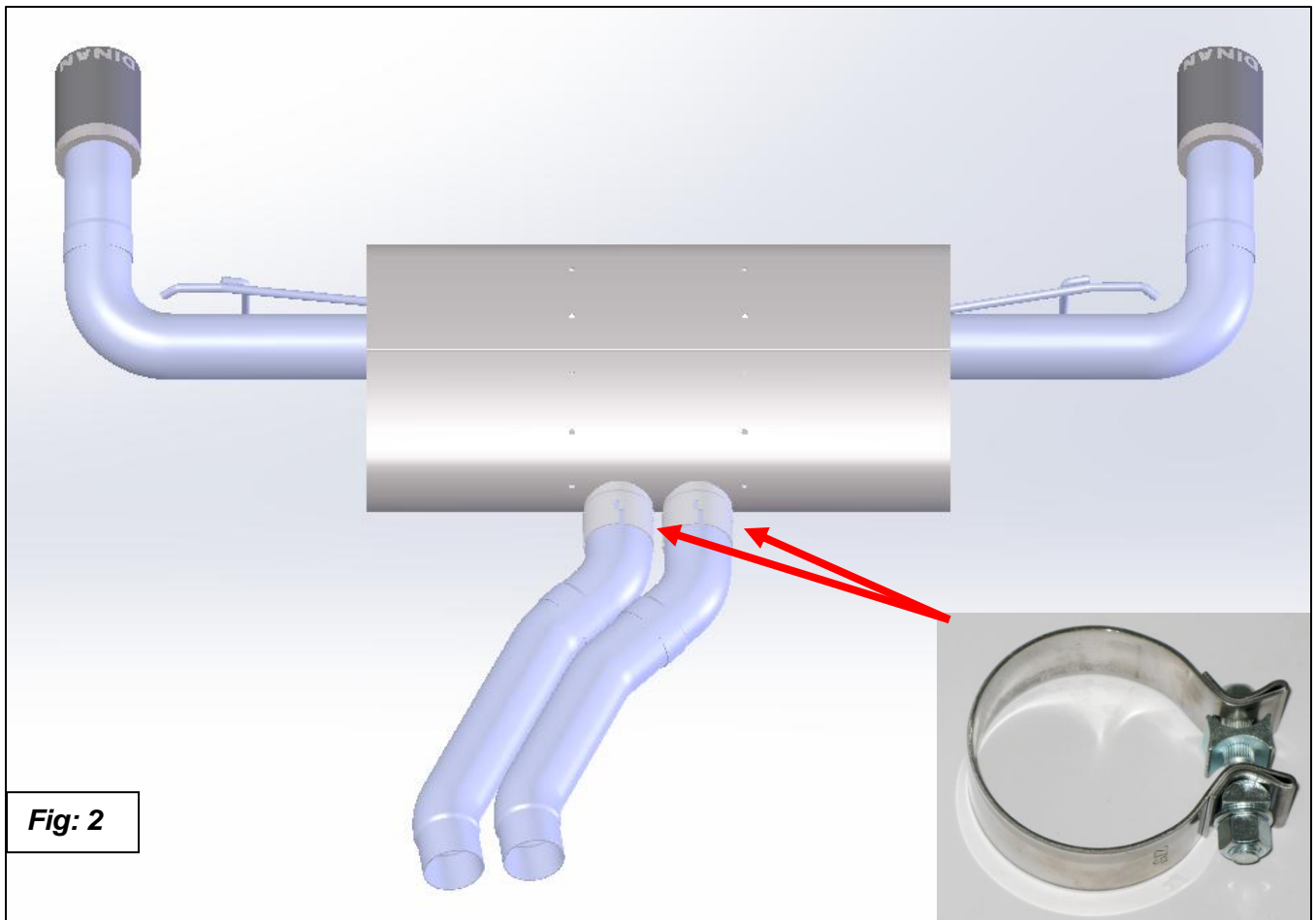
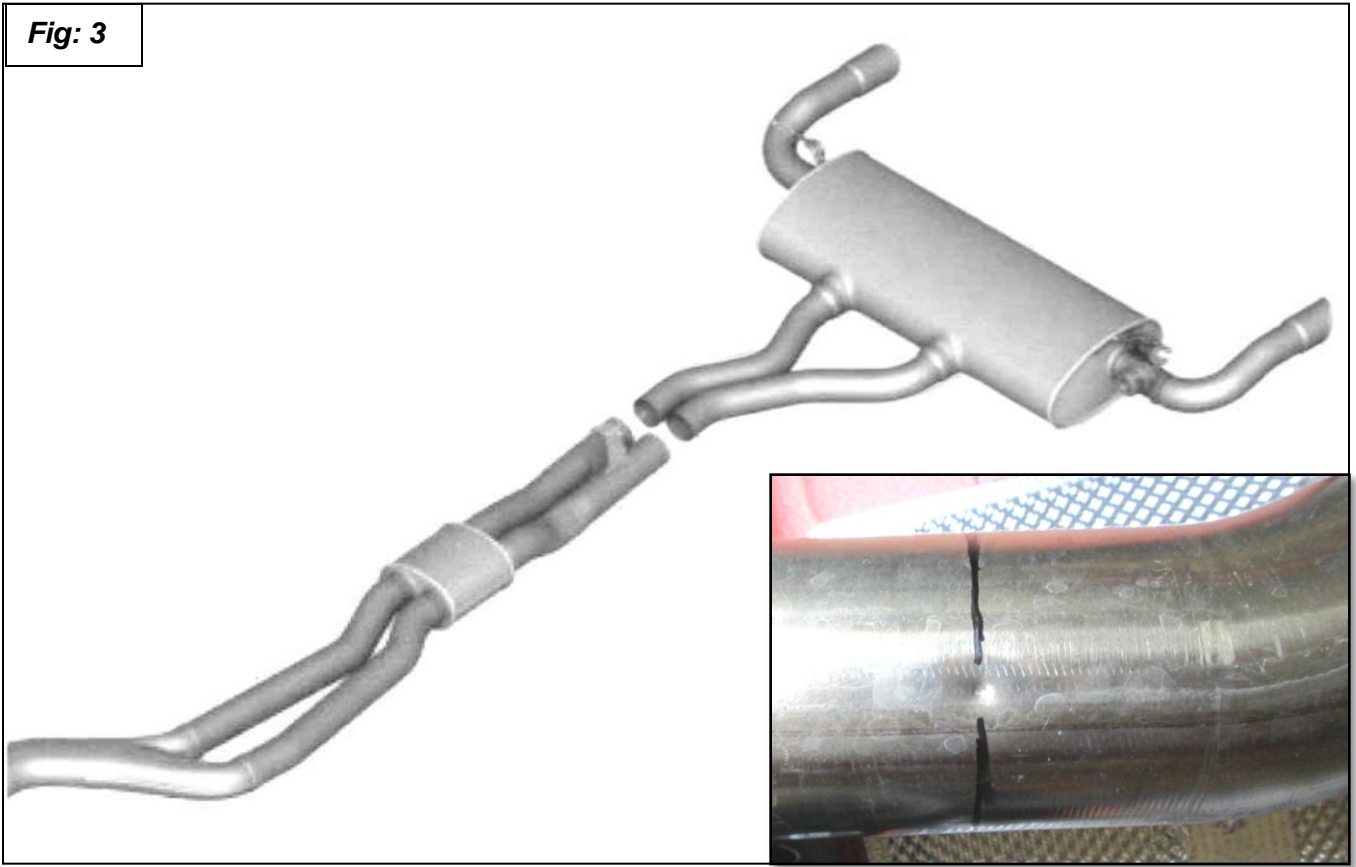
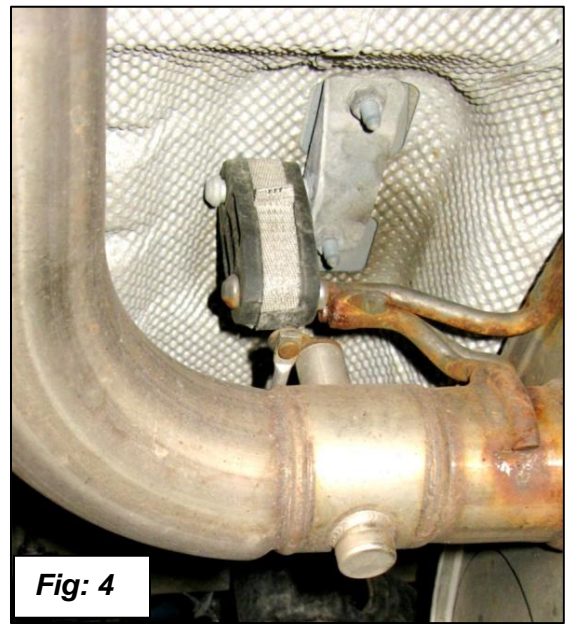


Fig: 2

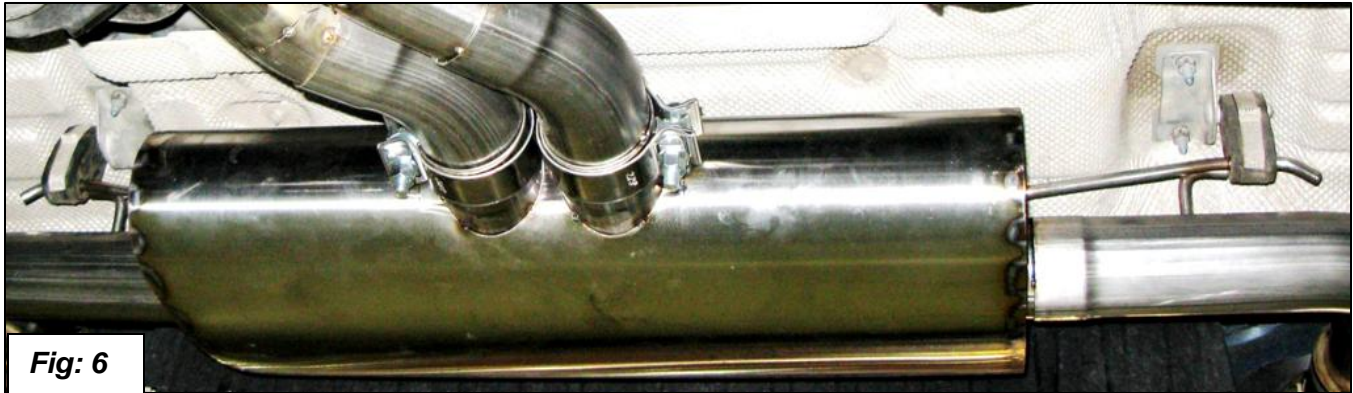
- Support the muffler securely with a jack or a stand, then cut the stock muffler at the BMW cut dimple location as shown in the figures below. Before cutting the stock muffler, hold DINAN muffler underneath stock muffler to verify the stock pipe will not be cut too short! See Figure 3.



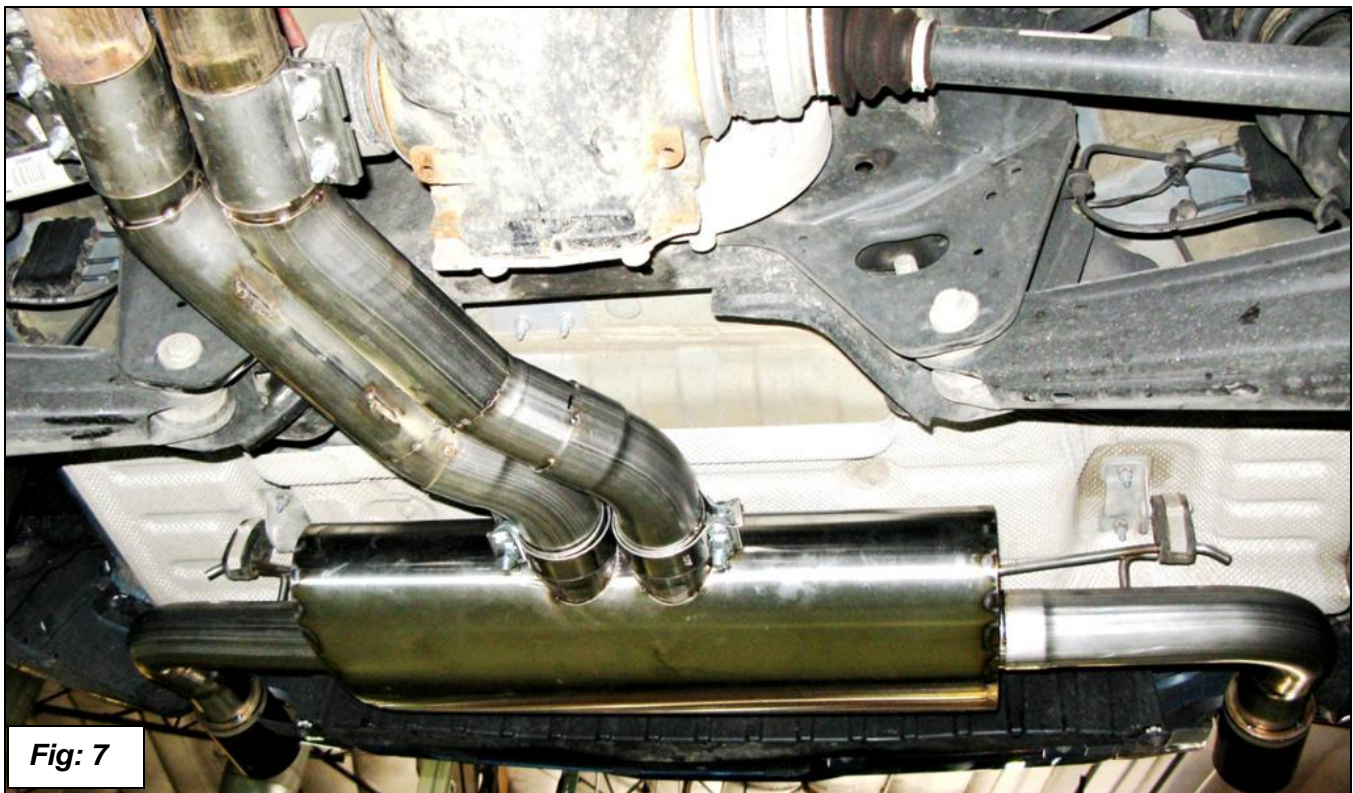
- With the stock muffler fully secure and supported on a jack or stand, remove the hanger nuts (SAVE THESE NUTS FOR INSTALLATION OF DINAN MUFFLER!), then remove stock muffler. See Figures 4 and 5.



6. Transfer both stock hangers from stock muffler onto DINAN muffler, keeping them on the same side and direction. See Figure 6.



7. Place exhaust couplers provided in the hardware kit onto the inlet ends of the stock tubes on the car. With DINAN exhaust secured on a jack, lift the muffler into place by positioning the inlet tubes into the couplers and the exhaust tips into cutouts in the bumper, then slide the couplers so they are centered between the inlet tubes that mate up to the stock tubes. With the clamps slid over the tubes, push the muffler forward against the ends of the stock pipes. See Figure 7.



8. Mount both muffler hangers using the stock mounting nuts that were saved from removal of the stock muffler. Torque the nuts to **14 ft-lbs (19 Nm)**. See Figures 8 and 9.

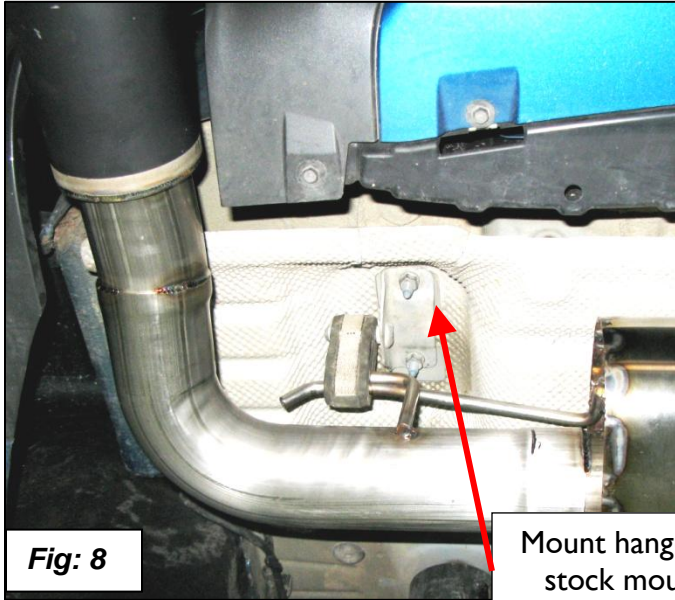


Fig: 8

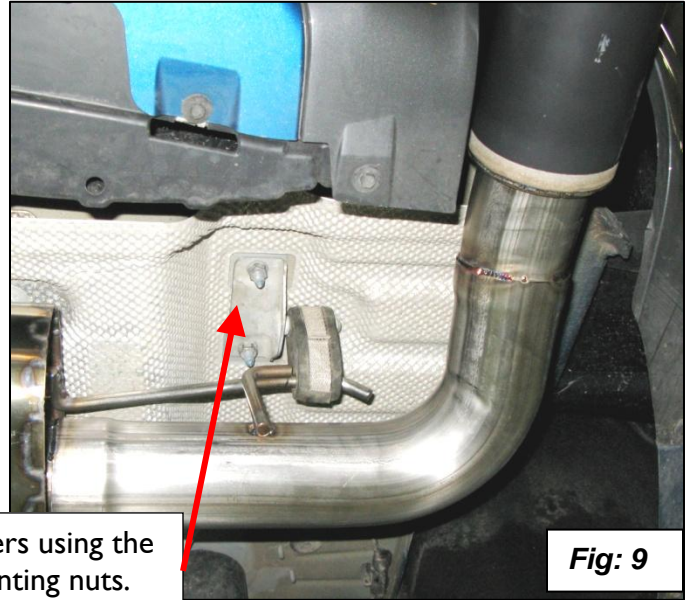


Fig: 9

Mount hangers using the stock mounting nuts.
Torque to 14 ft-lbs (19 Nm)

9. With exhaust clamps rotated as shown, tighten clamps. Couplers with 8mm bolts are torqued to 24 ft-lbs., and the 10 mm bolts on the muffler clamps are torqued to 45 ft-lbs.



Fig: 10

10. Check the exhaust tips for proper bumper clearance and proper alignment. See Figures 11 and 12. Adjust muffler if needed.



Enjoy your new DINAN exhaust!