



COLD AIR INTAKE

INSTALLATION INSTRUCTIONS

PART NUMBER: D760-0045

APPLICATIONS:

2015-18	F80	M3 Sedan
2015-19	F82	M4 Coupe
2015-19	F83	M4 Convertible
2019	F87	M2 Competition

PARTS LIST

(1)	MAF	(D762-0204)
(1)	Airbox Lid; Left	(D762-0205)
(1)	Airbox Lid; Right	(D762-0206)
(1)	Carbon Tube	(D762-0207)
(1)	Air Filter	(D401-0022)
(1)	Silicone Hose	(D762-0208)
(1)	Hardware Kit	(D763-0156)

Congratulations for being selective enough to use a Dinan High Flow Cold Air Intake. We have spent many hours developing this system to assure that you will receive maximum performance and durability with minimum difficulty in installation.

Please take the time to read these instructions thoroughly before proceeding. When performing the installation, read the entire numbered instruction before working on the car. If you feel that you do not have the requisite skill, please arrange for a qualified repair facility to perform the installation.

If you have any difficulties during the installation, or if these instructions are not clear to you, please call Dinan's Technical Support Staff at (800) 341-5480.

Fig: 1



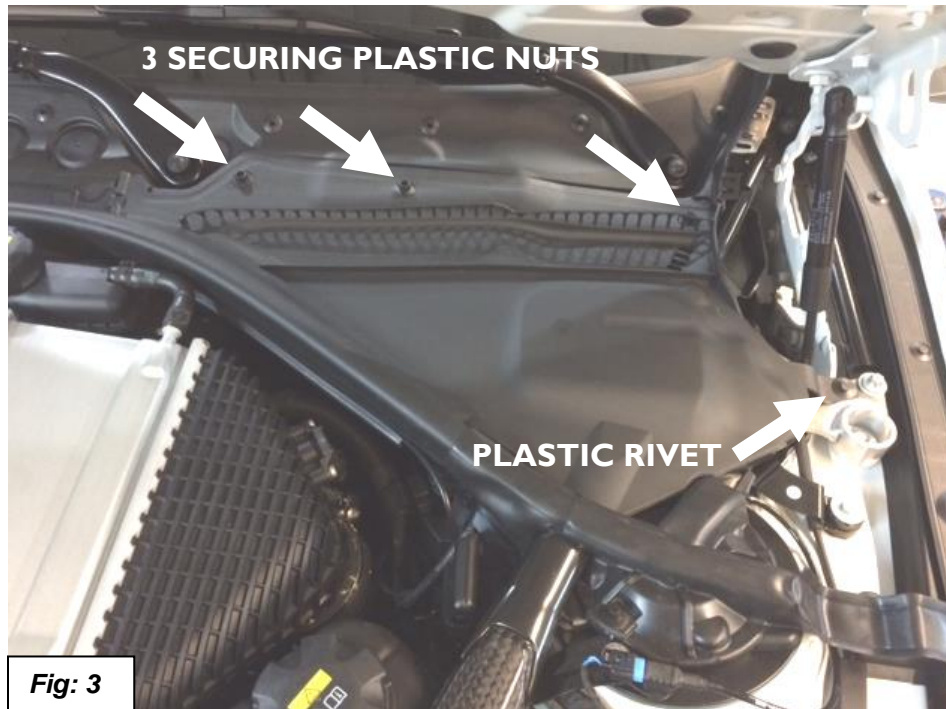
INSTALLATION INSTRUCTIONS

Disassembly

1. Make sure the car is completely off (electronically) so as to not trigger any faults when electronic circuits are temporarily severed.
2. Open hood and remove the (2) cover panels that cover the OEM carbon brace. This is done by gently loosening the (3) plastic nuts and removing the plastic rivet on each side. See Figures 2 & 3.



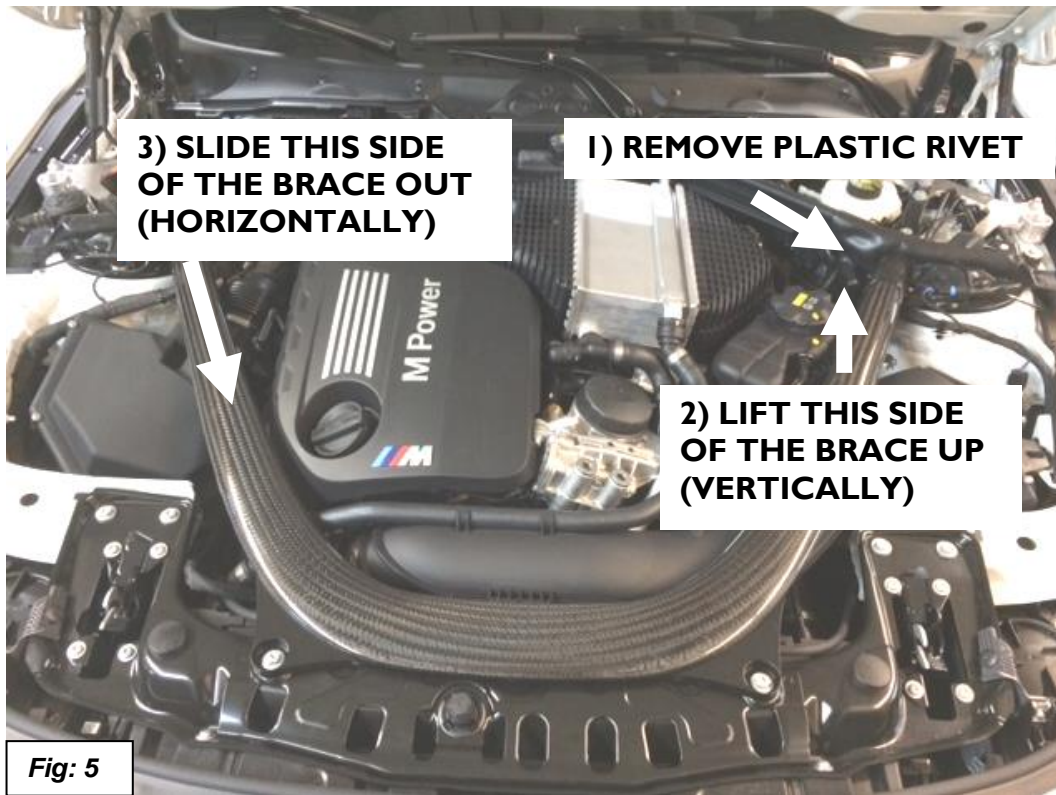
Fig: 2



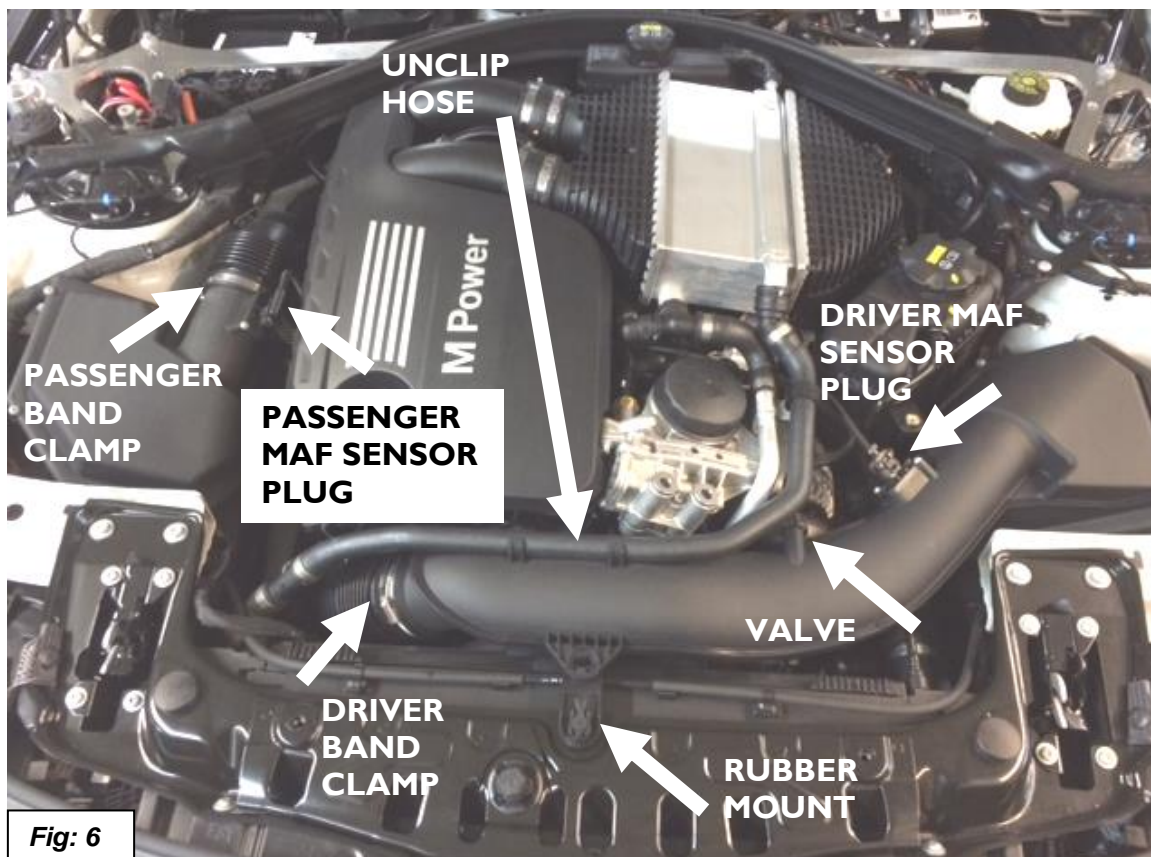
3. Next remove the (9) bolts that secure the carbon brace to the car. (8) of the bolts require a 13 mm socket, while (1) requires a 10 mm socket. See Figure 4.



4. Remove the carbon brace as shown in Figure 5.



5. Loosen both band clamps and gently remove MAF sensor plugs. Unclip hose from driver side intake tube. Carefully remove the fuel tank breather valve on driver side intake tube. Some cars do not have this valve. Release driver side intake tube from rubber mount. See Figure 6.



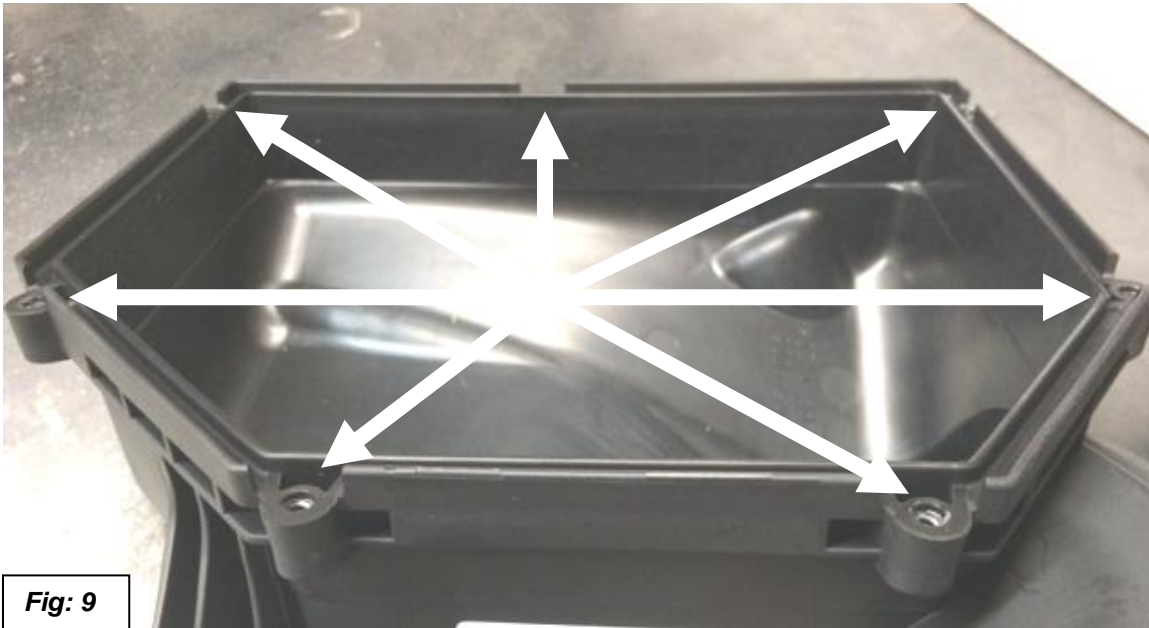
6. Remove each intake from its corresponding accordion boot. At this point the intake assemblies are ready for removal. Each are simply sitting on rubber bushings. Gently pull each assembly up vertically. See Figure 7.



7. Remove MAF sensors from MAF tubes using T20 Torx and reinstall on Dinan MAFs using the same screws. See Figure 8.



8. Remove fillister head screws that secure upper airbox lid to lower airbox with T25 Torx (7 screws). See Figure 9.



9. Clean out track in lower airbox. See figure 10.



10. Insert adhesive gasket into lower airbox track. Peel off adhesive backing paper before installing. Trim gasket as necessary for proper fit. See figure 11



11. Insert spacers into Dinan carbon lid (7 spacers). Spacers should be flush with lid surface. Insert MAF into Dinan carbon lid. Secure with (4) M4x8 button head screws and tighten. Bolt pattern allows for only one correct orientation. See Figure 12.

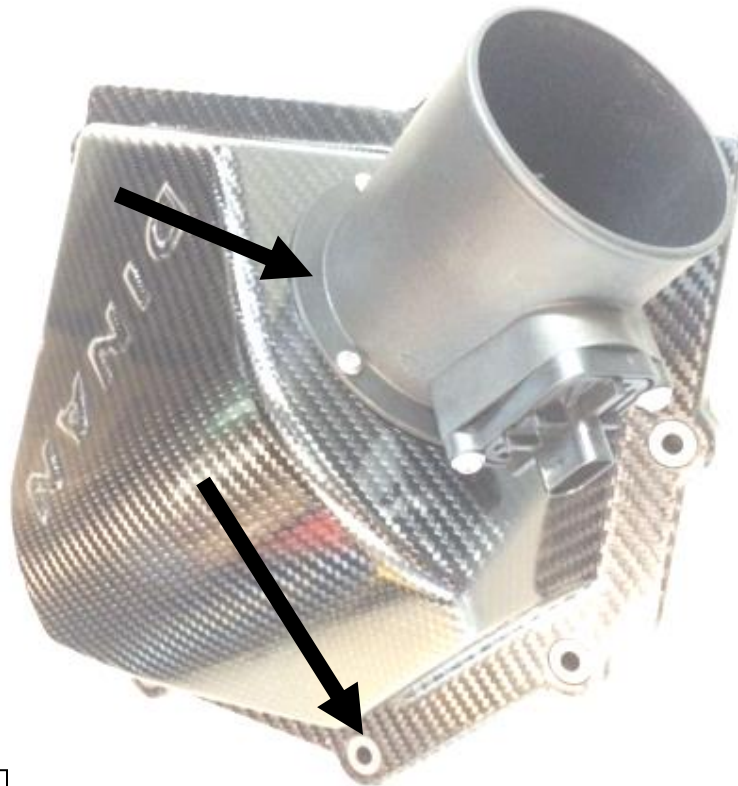


Fig: 12

12. Notice that the groove on the inside of the filter matches the ridge on the MAF. See Figures 13 & 14.



Fig: 13



Fig: 14

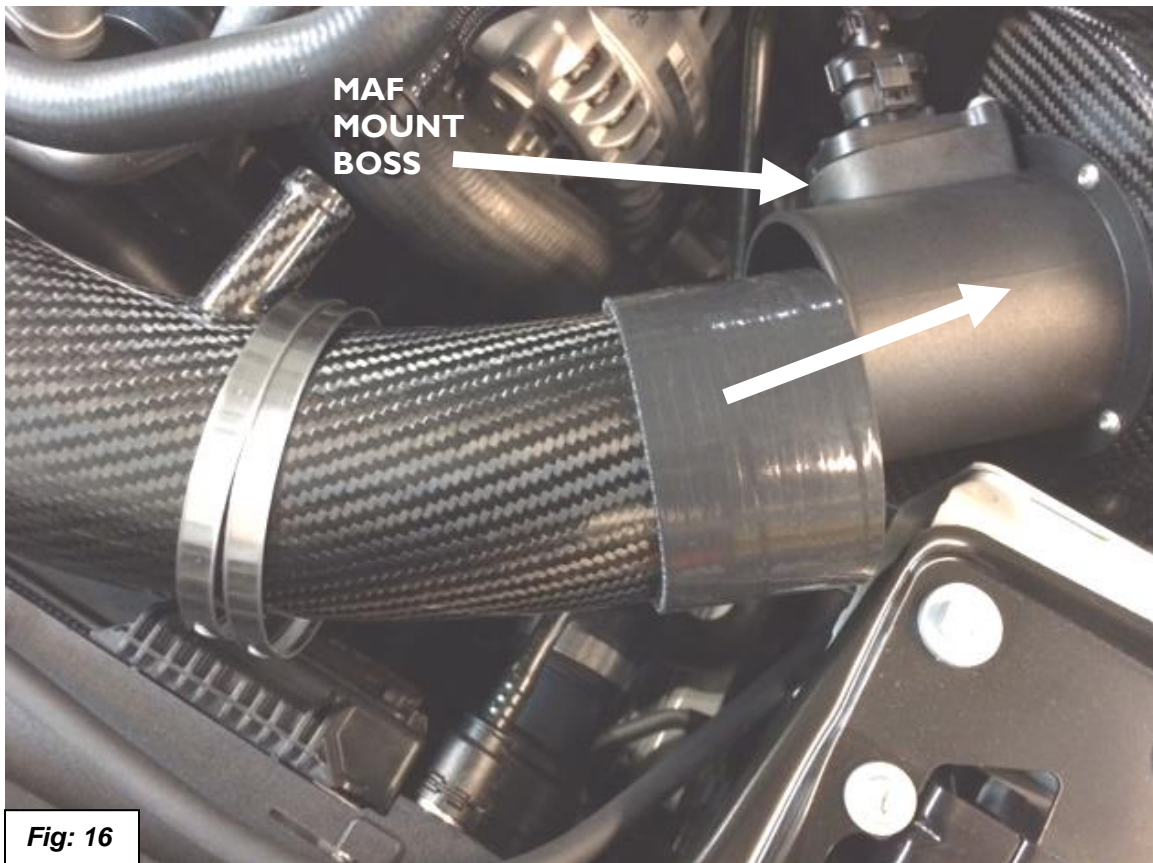
13. Install filters onto the MAFs. Make sure they are fully seated. Twist filters as necessary to find optimum orientation, where little to no interference occurs with the Dinan carbon lid. Passenger side may be a little trickier to slide in, but with the proper pressure and twist the filter should slide right on with no problems. Don't tighten clamp yet. See Figure 15.



Fig: 15

14. Test fit Dinan carbon lid on lower airbox to ensure the filter doesn't interfere with the lower airbox. If necessary rotate filter for clearance. Tighten clamp on filter.
15. Install upper lid onto lower airbox and secure with the original fillister head screws (7 screws).
16. Reinstall airbox assemblies. Make sure the mount provisions on the lower air box are properly seated in there associated rubber bushings.
17. Reconnect passenger side accordion boot and tighten hose clamp.
18. Reattach MAF sensor plugs.

19. Slide silicone hose over the carbon tube with (2) loose hose clamps. Install carbon tube into its proper accordion boot. Slide silicone hose onto MAF until it hits the MAF mount boss. Tighten hose clamp on MAF first. Then make sure the silicon is overlapping with the carbon by a 1/2" or more. Tighten second clamp on carbon. See Figure 16 & 17.



20. Tighten hose clamp on accordion boot. Attach hose loop clamp with M4x8 button head screw. See Figure 17.



21. Reattach Fuel tank breather valve. *Note your car may not have this provision. In this case, install the vinyl cap provided in the hardware kit. See Figures 18 & 19.

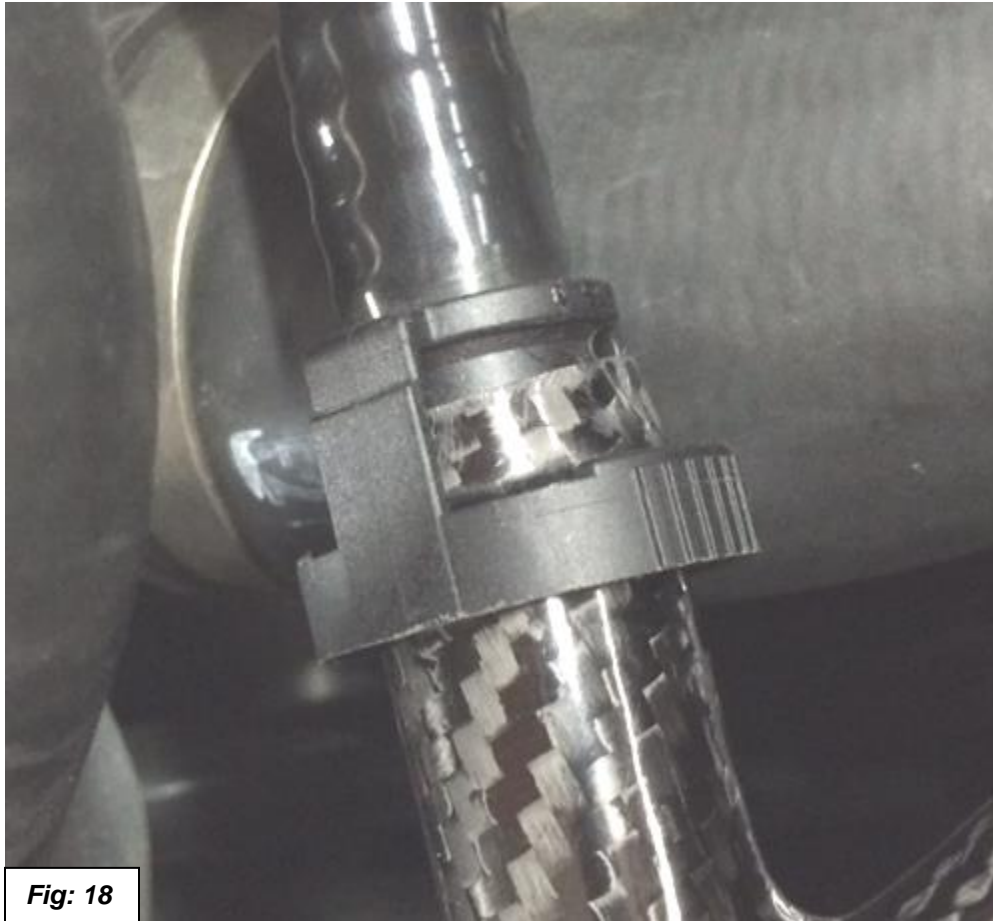


Fig: 18

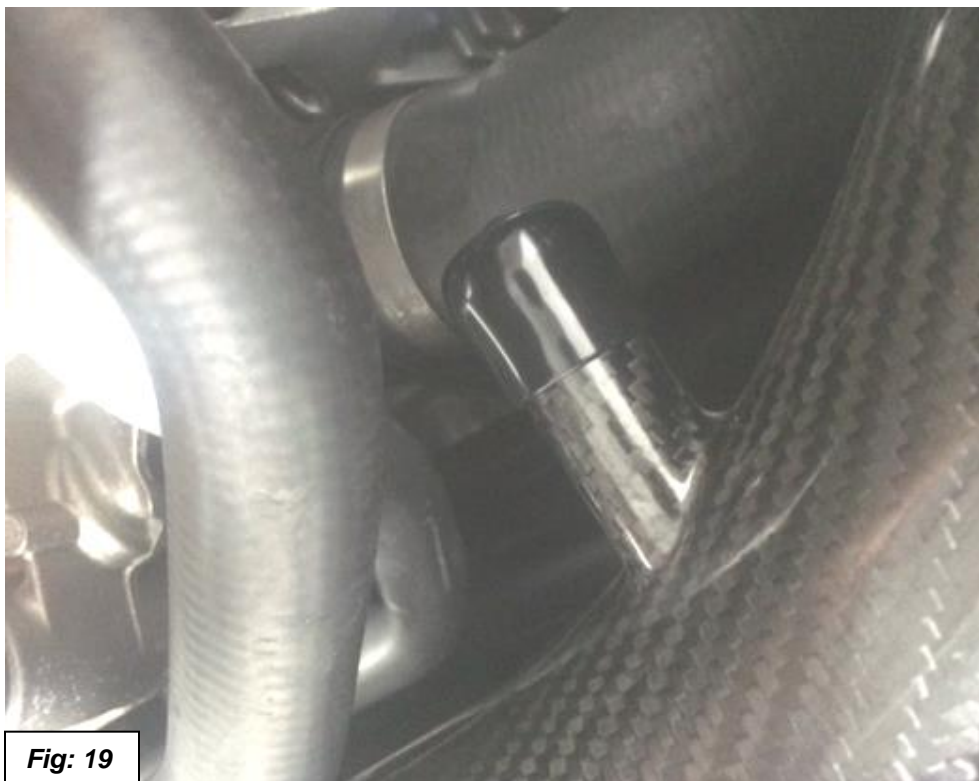


Fig: 19

22. At this point everything intake related should be reinstalled.
23. The carbon brace and plastic covers can now be reinstalled as per BMW's instructions. *Please note that BMW recommends replacing the carbon brace hardware. The (8) M10 bolts are torqued to 28 NM.
24. Your installation is complete!



Fig: 20